



Hydraulic Cylinder Assembly

Introduction:

This manual has been put together to help you gain a better understanding of the GME 2" Hydraulic Cylinder. The cylinder has been broken down into six steps.

Tools needed:

Impact wrench (or #10 crescent wrench), hydraulic press (vertical and horizontal), air press, flat-head screwdriver

Materials needed:

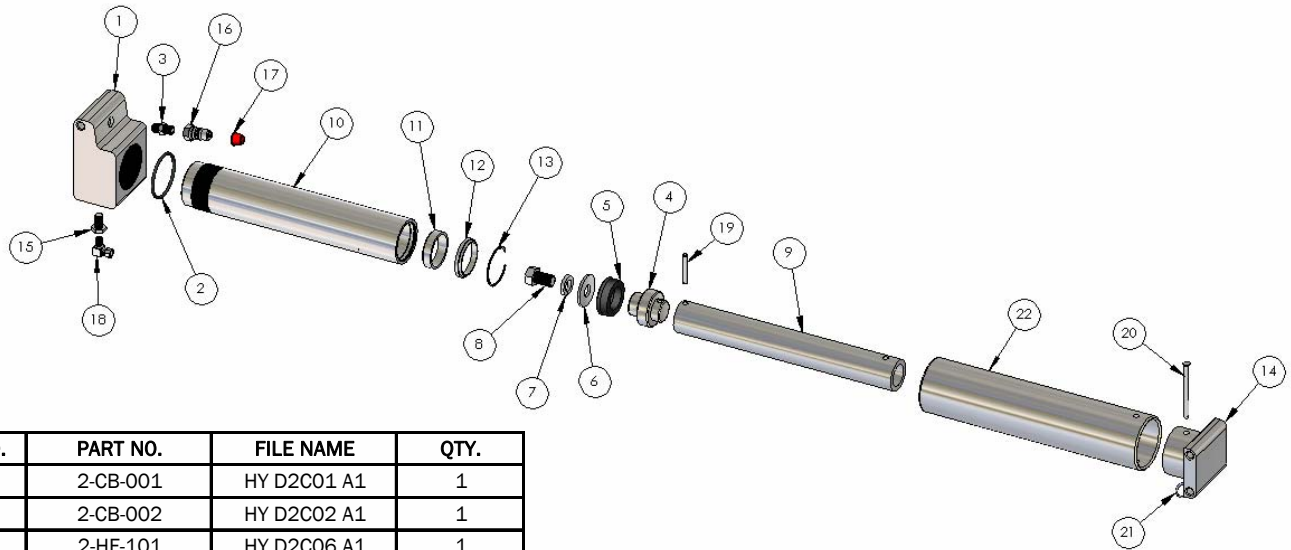
Plumbers tape, pipe dope

Fluid Requirements:

GME does not recommend the use of any type of shoring or hydraulic fluid other than the shoring fluid GME offers.

Testing:

After the 2" cylinder is built it is tested on an air press. The cylinder is run out to the point where air is pushed out of the weep hole. This test is done three times. While the cylinder is extended the cylinder barrel is checked for any defects or scratches. This assures that the cylinder operates correctly and there are no leaks when in actual use. If there are any leaks or defects the cylinder is taken apart. If there are defects to the cylinder barrel it is ground with a power sander. If there are leaks present the seals are checked and replaced if needed.



ITEM NO.	PART NO.	FILE NAME	QTY.
1	2-CB-001	HY D2C01 A1	1
2	2-CB-002	HY D2C02 A1	1
3	2-HF-101	HY D2C06 A1	1
4	2-PR-004	HY D2C12 A1	1
5	2-PR-006	HY D2C14 A1	1
6	2-PR-007	HY D2C15 A1	1
7	2-PR-008	HY D2C16 A1	1
8	2-PR-009	HY D2C05 A1	1
9	2-PR-XX	HY D2C20 A1	1
10	2-CB-XX	HY D2C03 A1	1
11	2-PR-003	HY D2C19 A1	1
12	2-PR-002	HY D2C10 A1	1
13	2-PR-001	HY D2C09 A1	1
14	2-PR-010	HY D2C18 A1	1
15	2-HF-102	HY D2C05 A1	1
16	2-HF-103	HY D2C04 A1	1
17	RED CAP	HY D2C21 A1	1
18	2-HF-104	HY D2C07 A1	1
19	2-PR-005	HY D2C13 A1	1
20	2-VS-003	HY DEX14 A1	1
21	2-VS-002	HY DVS13 A1	1
22	2-OS-XX	HY D2C08 A1	1

XX = Model Type